

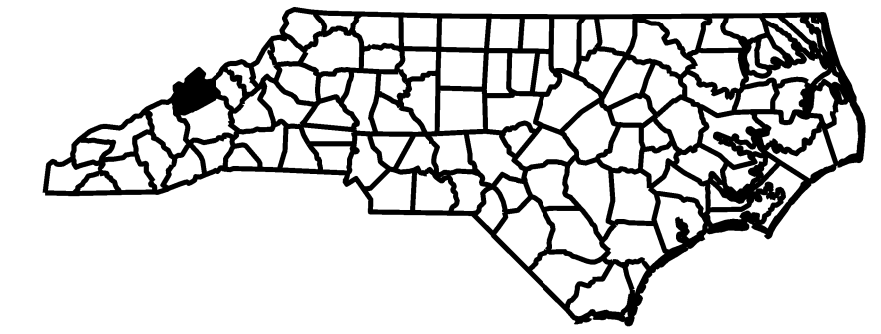
STATE OF NORTH CAROLINA
DIVISION OF HIGHWAYS

MADISON COUNTY

LOCATION: SR-1143 (UPPER BRUSH CREEK RD) FROM BRUSH CREEK SCHOOL ROAD TO BRIDGE 148 OVER BRUSH CREEK

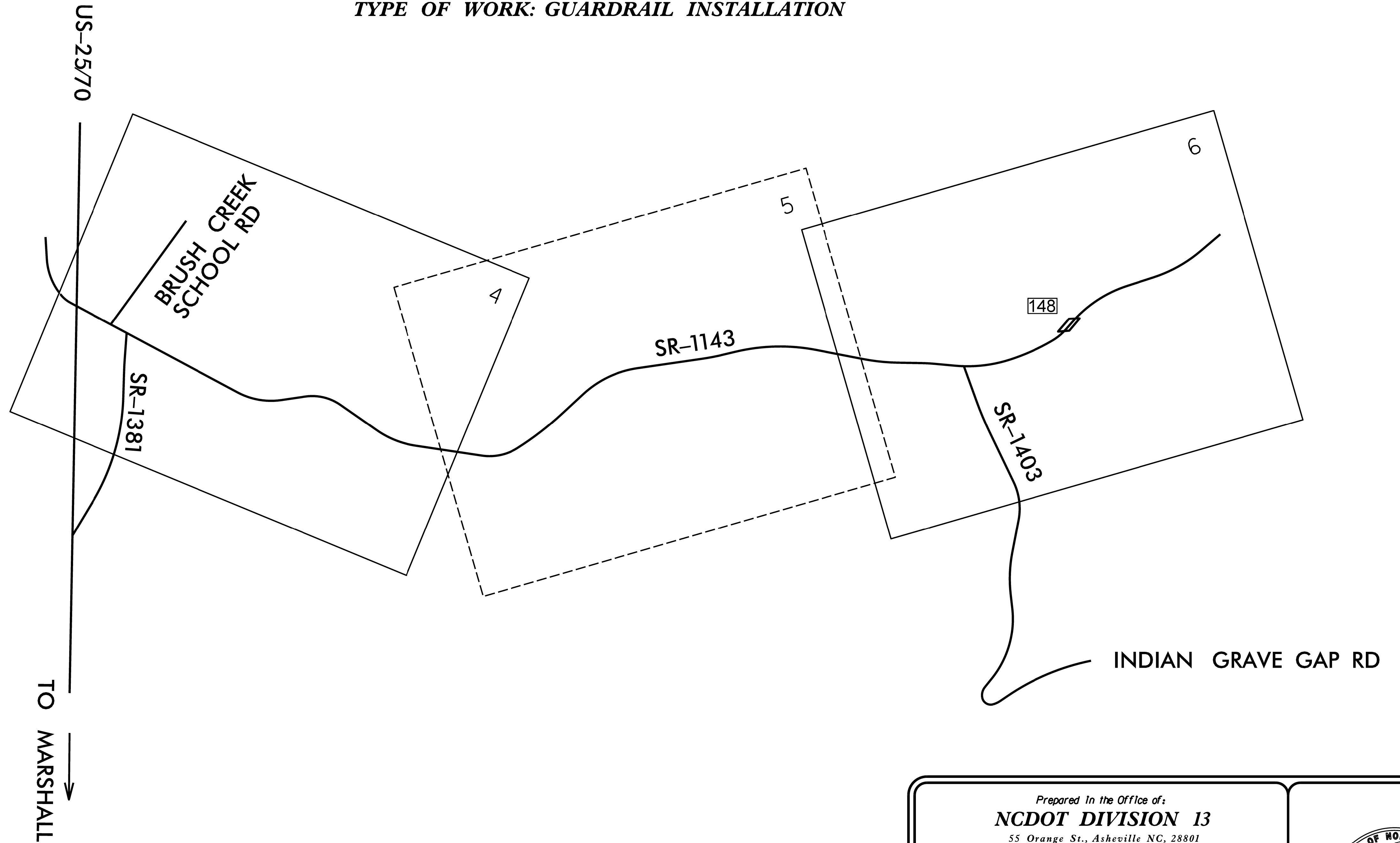
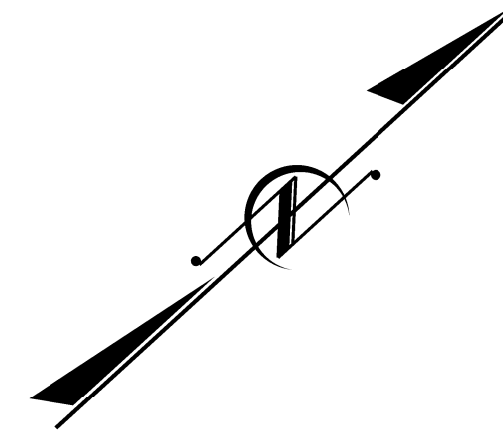
TYPE OF WORK: GUARDRAIL INSTALLATION

STATE	STATE PROJECT REFERENCE NO.	SHEET NO.	TOTAL SHEETS
N.C.		1	
STATE PROJ. NO.	F.A. PROJ. NO.	DESCRIPTION	
13.205711		CONST.	



TIP PROJECT:

CONTRACT: DM00261



Prepared In the Office of:
NCDOT DIVISION 13
55 Orange St., Asheville NC, 28801

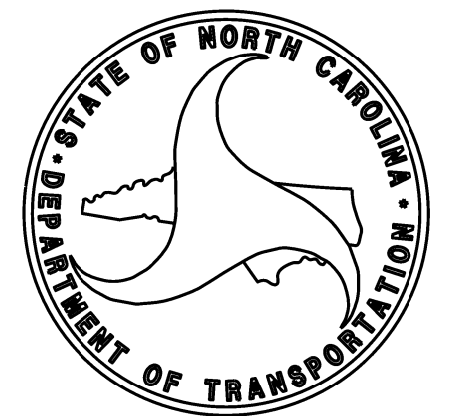
2018 STANDARD SPECIFICATIONS

RIGHT OF WAY DATE:

PROJECT ENGINEER

LETTING DATE:
AUGUST 15, 2018

PROJECT DESIGN ENGINEER



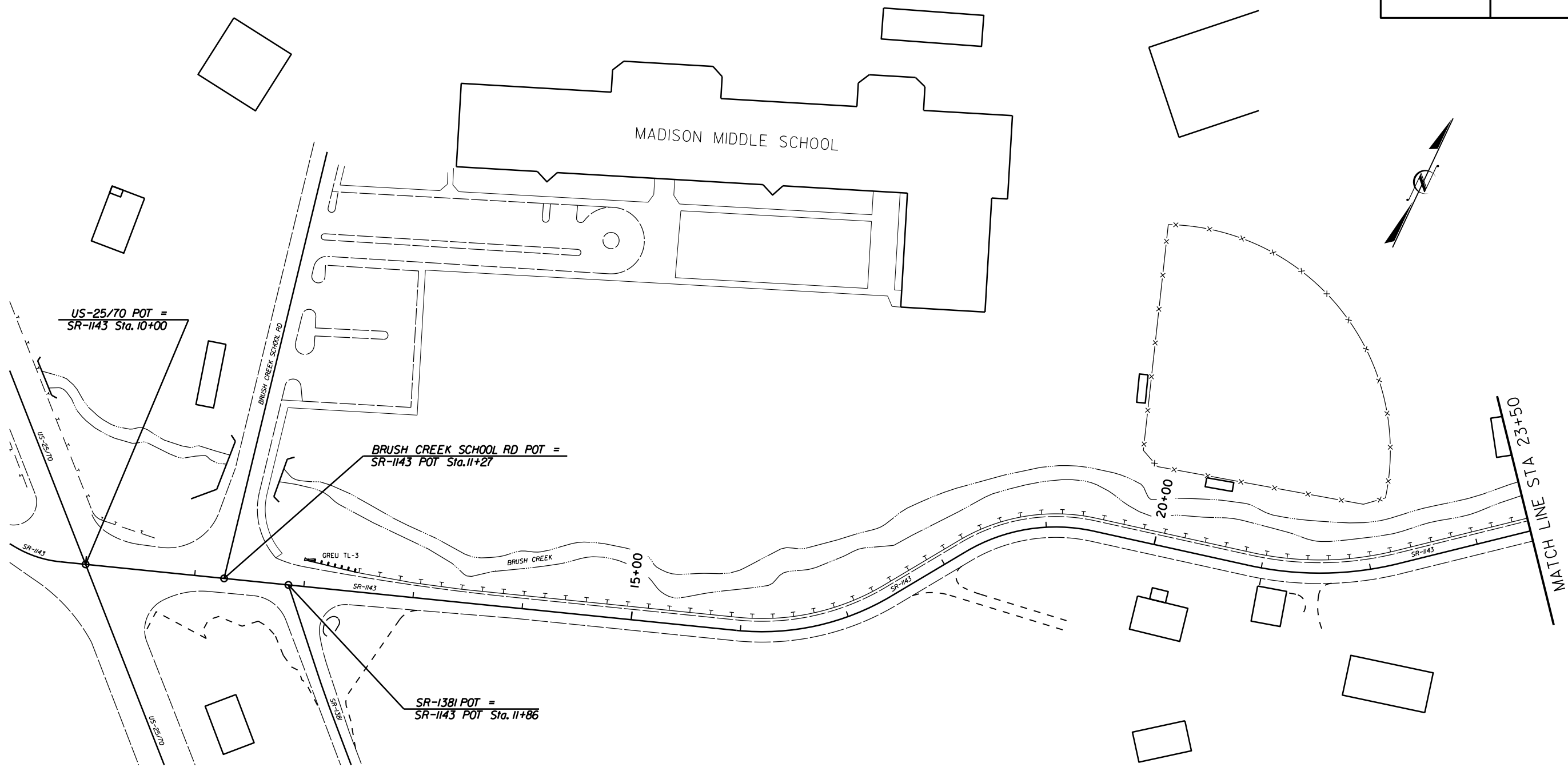
PROJECT REFERENCE NO.	SHEET NO.
	4
RW SHEET NO.	
ROADWAY DESIGN ENGINEER	HYDRAULICS ENGINEER
INCOMPLETE PLANS DO NOT USE FOR R/W ACQUISITION	

8/17/99

REVISIONS

DM00261

03. 872408



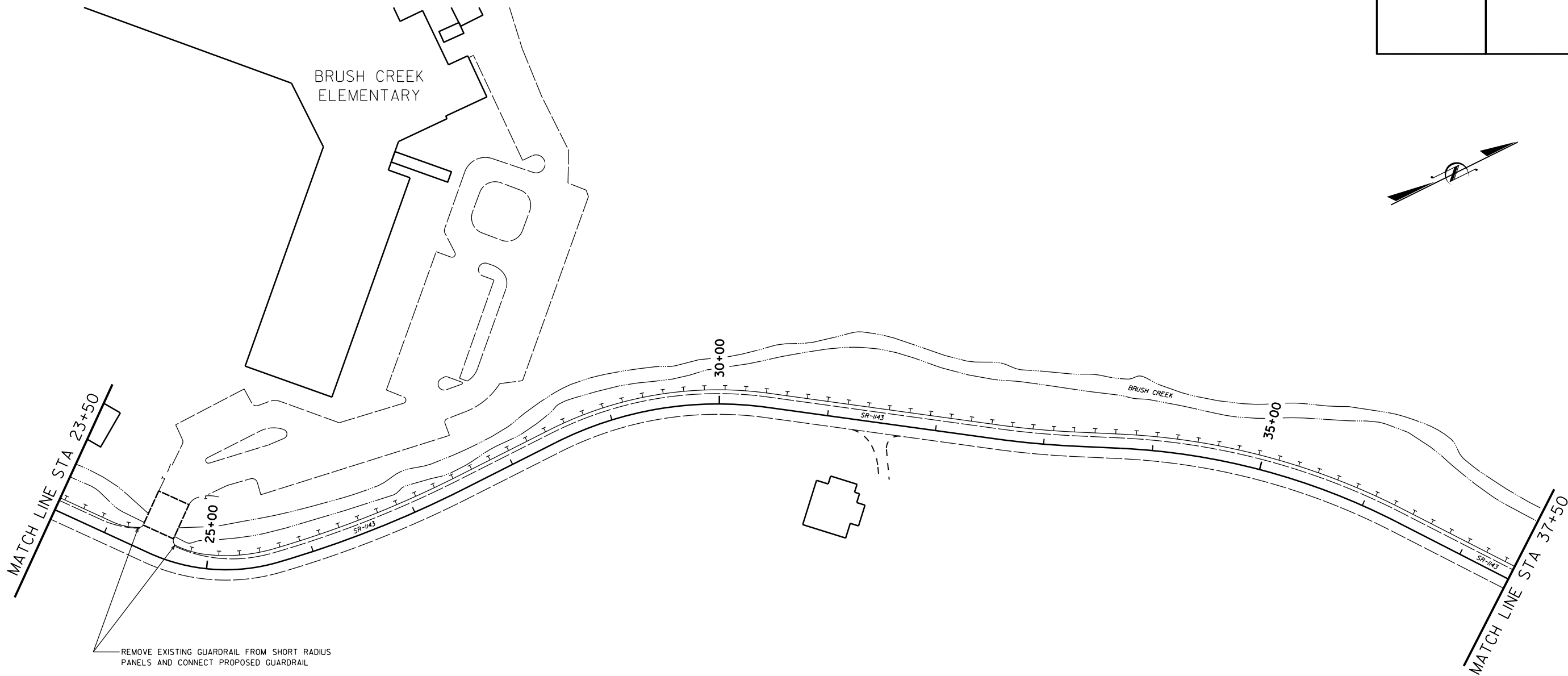
8/17/99

REVISIONS

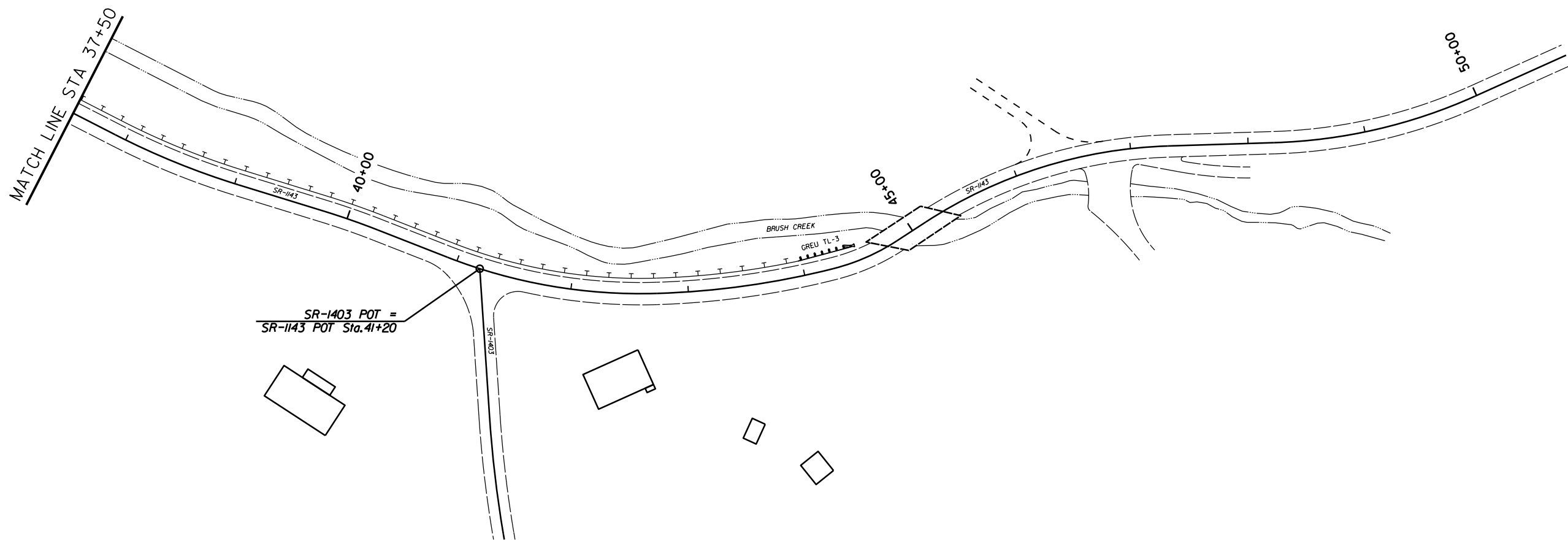
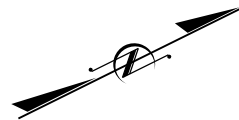
DM00261

DL 8/24/98

PROJECT REFERENCE NO.	SHEET NO.
	5
RW SHEET NO.	
ROADWAY DESIGN ENGINEER	HYDRAULICS ENGINEER
INCOMPLETE PLANS DO NOT USE FOR R/W ACQUISITION	



PROJECT REFERENCE NO.	SHEET NO.
	6
RW SHEET NO.	
ROADWAY DESIGN ENGINEER	HYDRAULICS ENGINEER
INCOMPLETE PLANS DO NOT USE FOR R/W ACQUISITION	



DM00261

REVISIONS

8/17/99

DL 872408